



COMMUNICATION HUB



THE FIRST ITEM IS THE BRIDGE BETWEEN TETRAPOL AND MOBILE NETWORK

A **UNIQUE PUSH TO TALK** TO COMMAND THE DIRECT MODE AND RELAY MODE

On-Demand for Internal Security



Intervention forces
Policing
Civil security

Usable in other sectors



Military Operations
Critical Operations

The Main Actionner - Push To talk

The Actionner allows user to talk on outgoing and ongoing communications and fit with each user's preferences.

Switches :

- Rotactor switch allows user to swap on 5 different communication channel.
- 2 Push to talk switch, one in front of the Actionner for a better accessibility.
- Silence switch,
- Volume +/- switches
- Switch to pick-up a call
- Alarm switch : push a notification to other users and central to say you are in danger.

Hardware :

- IP54 : Rugged product against humidity and water
- 4 Bumpers to absorb impacts
- Dimensions : 9.3 (H) x 7.3 (L) x 2.5 (P) cm
- Weight : 185g



The HUB & Batterie

The HUB :

Our HUB has multiple connexions for different devices (7 USB-C) and a Jack for audio.

We gave it an anti-tearing system to avoid disconnection with the batterie once the user has the equipment in his pocket.

An anti-tearing system for cables is installed too.

Every connectors are waterproof, with plastic caps for not used ones.

Batterie :

The batterie empowers the HUB, the main Actionner and remote push-to-talk switches.

The batterie pack is removable easily to replace it by a new charged one. With this, we can avoid the rupture of services.

Dimensions HUB with it batterie : 11.9 (H) x 5.4 (L) x 3.3 (P) cm
Weight : 200g average



Remote Push-To-Talk : cable version and Bluetooth version

Remote Push-To-Talk switches works in parallel of the Actionner. We designed it for specific usage, like weapon or shield handling. Those switches are necessary when the user can't access to the main Push-To-Talk on the Actionner.

Remote switches are usable like the main Push-To-Talk and allows the user to pick-up a communication faster with a switch near to his hand.



Cable version :

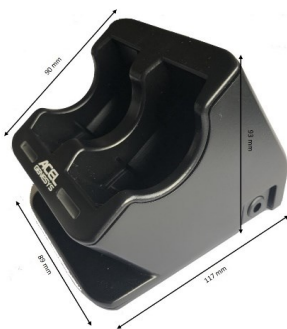
- Designed for a fixe position
- Directly connected to the HUB, to avoid misconnection or interference
- Specific plastic to grip the user's finger
- Dimension : 3 (L) x 2.5 (l) x 1.4 (H) cm
- Weight : 20g



Bluetooth version :

- Designed for stand-up people
- Free movement
- Discretion
- Small battery : replaceable easily by turning a plastic button on the back.
- Specific plastic to grip the user's finger
- Dimension : 1.8 (H) x 4.2 (L) x 3.3 (l) cm
- Weight : 15g

Double Batteries Charger



- Charger allows to empower 2 batteries at once
- Scalable to 5 as a rack of charger
- Dimension : 9.3 (H) x 8.9 (L) x 11.7 (P) cm
- Weight : 205g

USB-C Connectors for the HUB



- Our USB-C cable are designed to prevent water or humidity inside the HUB.
- Allows multiple connection type

Communication HUB utilities



Send and receive multiple communications at the same time :

Double audio – third on demand
Communication on different channels



Multiple remote possibilities to fit with difference usage :

- Discretion missions
- Specific movements: THP, NRBC...
 - Mobility configurations : moto, car, ...



Network performance :

Create a bridge between mobile network (LTE) and analogic one (TETRAPOL).



Compatibilities :

The Actionner can be use with every type of Smartphone and every type of walky-talky used by police forces today. Development and validation are available for every type of cable needed.

Wireless Communication

We use the BLE (Bluetooth Low Energy) to maintain the service for a long time. The consumption is less important than the classic one as 10x.

Audio Output

The audio output can be in a Walky-Talky, in a Smartphone or in the headset. The double audio mode allows user with a stereo headset to have a communication on the left side, and another communication to the right side.

Technical Specifications

- Battery lifetime of 48H
 - IP54 certification
 - Versatility of the equipment allows to replace connections, buttons' configuration or battery.
-
- 7 USB-C connections and a jack connector for different direct connections.
 - Direct connection with headset in production today, with different type of connections : Lemo, Fisher, ...